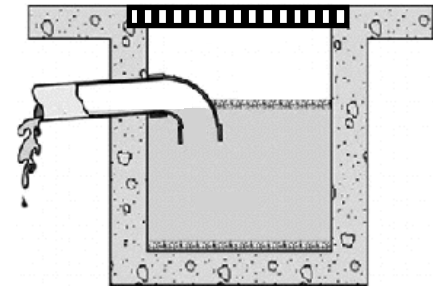
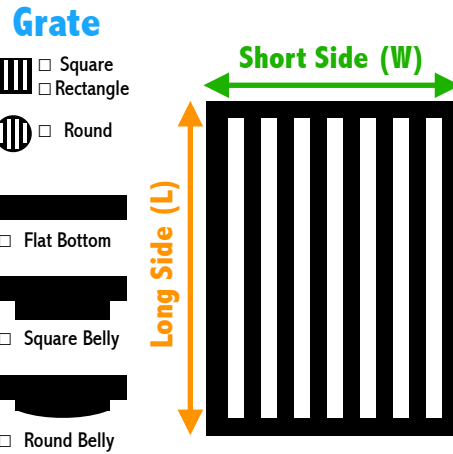


How to Measure the Catch Basin for Insert

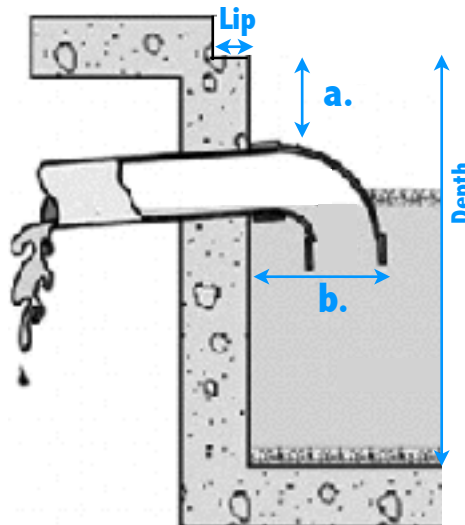
Company: _____
 Site Address: _____
 Site City/State/Zip: _____
 Site Contact Name: _____
 Site Contact Phone: _____
 Site Contact Email: _____
 Catch Basin Name/Number: _____
 Catch Basin Location: _____

Catch Basin	Long Side (Length) Inches	Short Side (Width) Inches
Grate		
Inside Opening		
Lip		
Depth (up to 36")		



Any Obstacles?

Where & What Size in Inches	On The Long Side?	Or The Short Side?
a. How Far Down		
b. How Far Out		
How Far Over		
How Wide Is It		

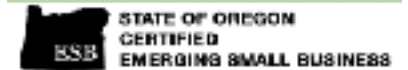


Stormwater **BIOCHAR** LLC

MAIL
 6628 SE 68th AVE
 Portland OR 97206

PHONE
 (503) 789-6760

EMAIL
info@StormwaterBIOCHAR.com

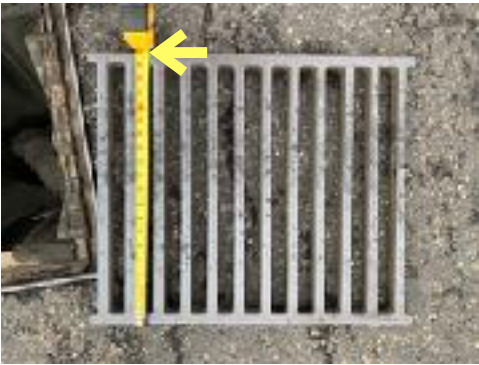


THE **RIGHT** BIOCHAR,
 THE **RIGHT** BLEND, DIALED IN

How to Measure the Catch Basin Continued

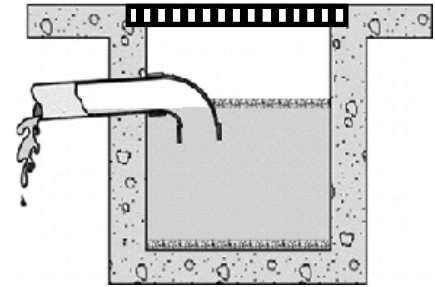
Top View Looking Down on your catch basin

Grate

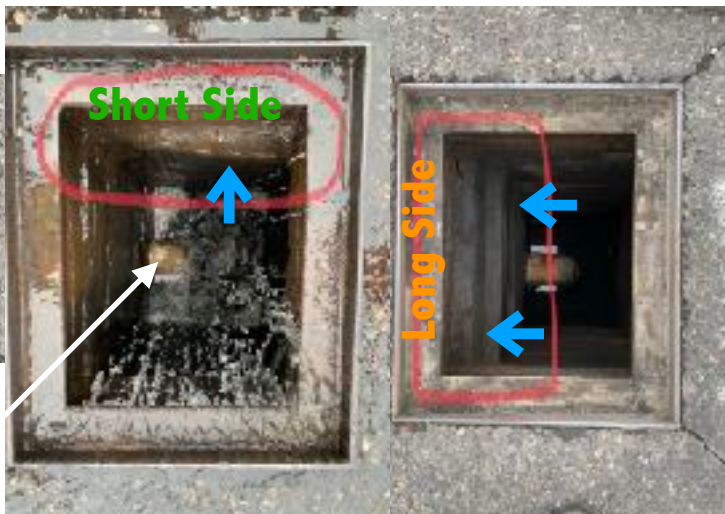


Catch Basin

Lip and Inside Opening



OBSTACLES



Obstacle Below 36"
 Maximum Depth
 Obstacles don't have to be
 just pipes.

Stormwater **BIOCHAR** LLC